

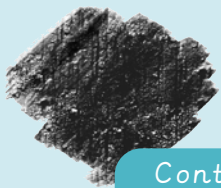


Composition	Putting different elements together in a pleasing way
Hue	Describing an exact colour: sky blue, dark green, rose pink
Proportion	How big a part of something looks compared to the rest of it
Shade	Adding black to a colour makes a shade
Shadow	A dark area created when light is blocked
Still life	An artwork showing a collection of things that don't move, e.g. objects rather than people
Tint	Adding white to a colour makes a tint
Tone	How light or dark a colour is

Still life



Creating contrast



Contrasting texture

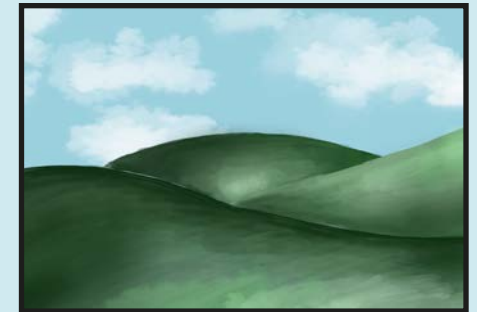


Contrasting colours

Using tints and shades can help a painted object appear three-dimensional

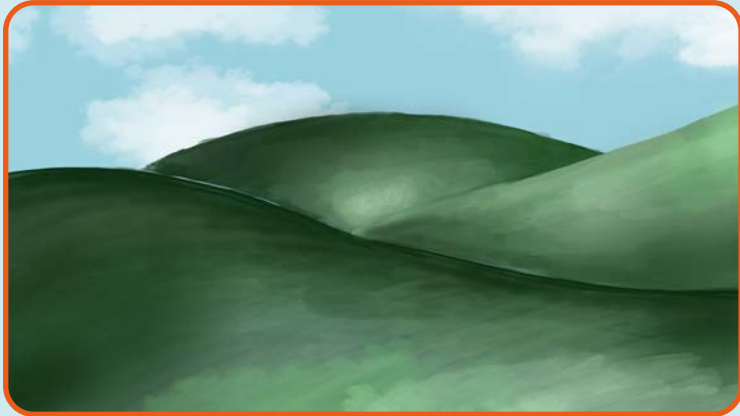


Portrait



Landscape

### Colour mixing



#### Making colours lighter:

+ a lighter colour  
+ water  
+ white

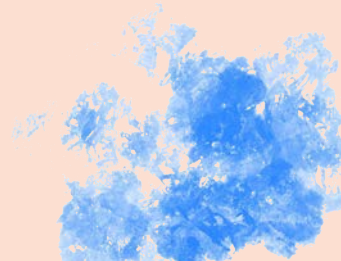


#### Making colours darker:

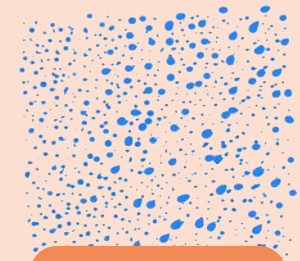
+ a darker colour  
+ black



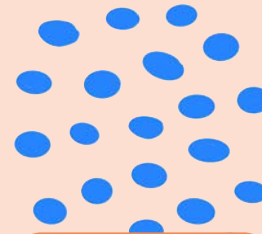
### Painting techniques



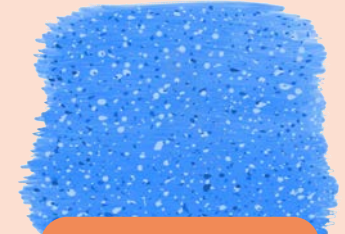
Dabbing



Stippling



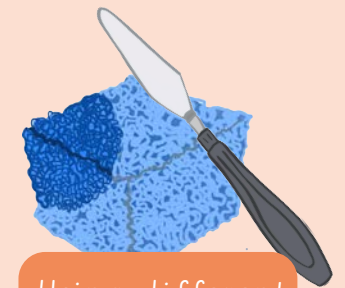
Pointillism



Adding texture to paint



Washes



Using different tools